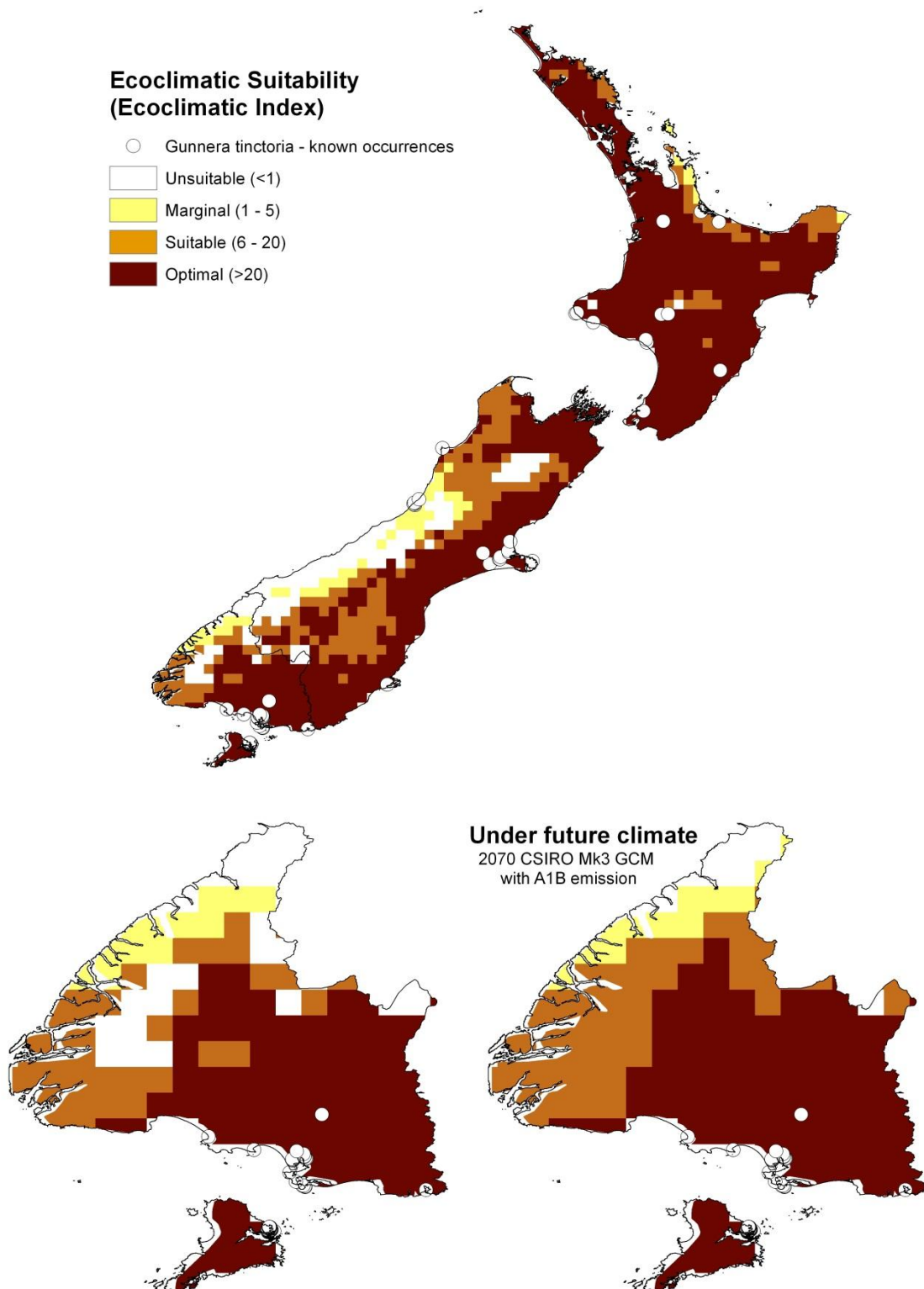


## *Gunnera tinctoria* (Chilean rhubarb)



CLIMEX model (Sutherst et al. 2007) for *Gunnera tinctoria* (Chilean rhubarb) showing how the suitability of the climate for the species' population growth varies across New Zealand under current climate, and for Southland, under the climate predicted for 2070 using the CSIRO Mk3 GCM and A1B emission (IPCC 2007). The model and the maps were developed by Shona Lamoureaux and Graeme Bourdôt, AgResearch, Lincoln. The authors acknowledge funding from MPI under Medium Advice Grants 1306-ESRC 259 and 1405-ESRC 260 and Landcare Research under the Beating Weeds II programme.

IPCC 2007. Climate Change 2007: Working Group II: Impacts, Adaptation and Vulnerability. [http://www.ipcc.ch/publications\\_and\\_data/ar4/wg2/en/ch1s1-3-2-2.html](http://www.ipcc.ch/publications_and_data/ar4/wg2/en/ch1s1-3-2-2.html). 23 February.

Sutherst RW, Maywald GF, Kriticos DJ 2007. CLIMEX Version 3 User's Guide. Melbourne, Commonwealth Scientific and Industrial Research Organisation.