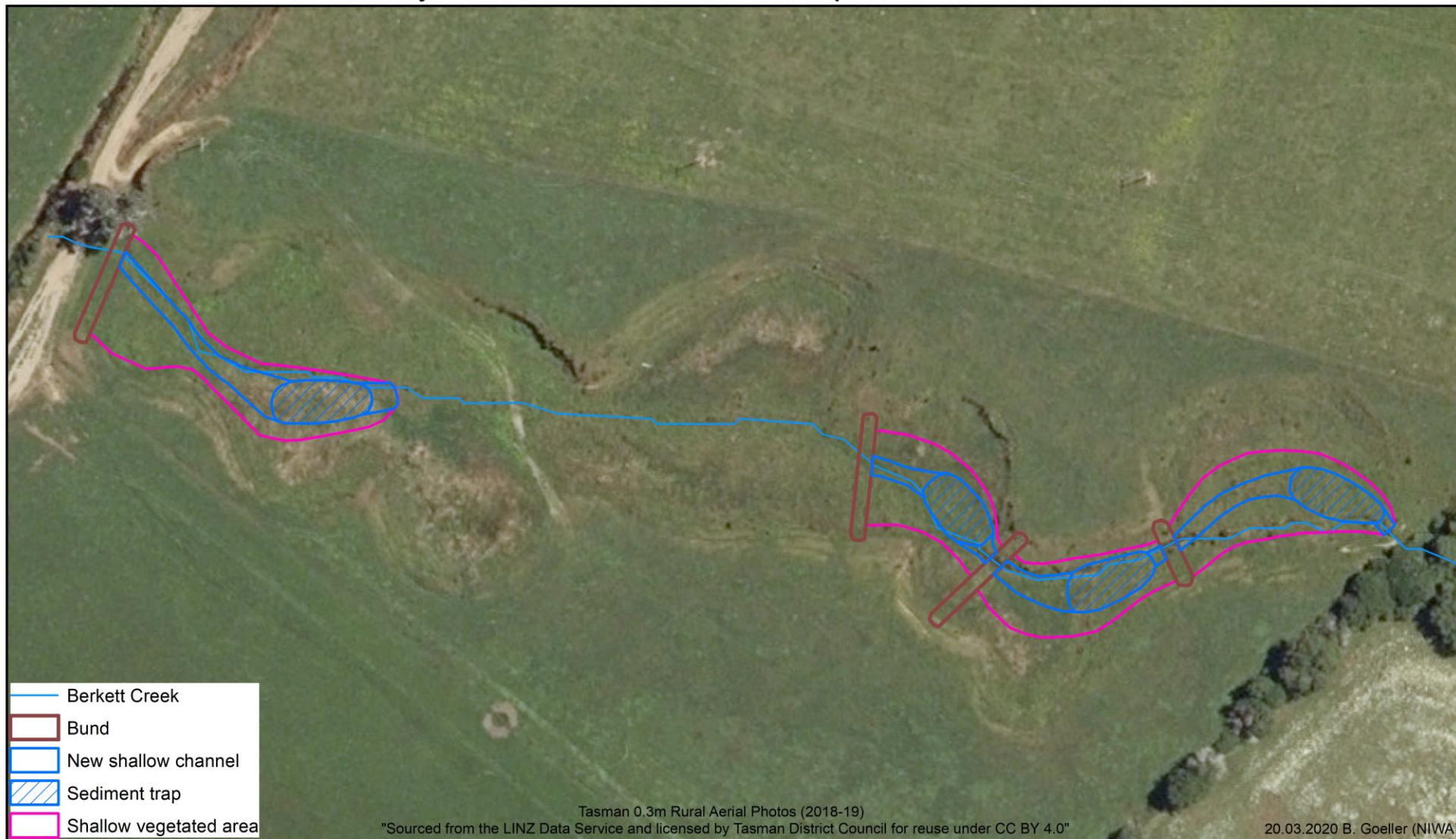


# Reilly Farm, Berkett Creek Floodplain Reconnection

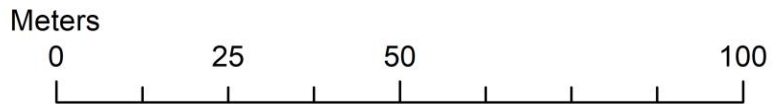


- Berkett Creek
- ▭ Bund
- ▭ New shallow channel
- ▨ Sediment trap
- ▭ Shallow vegetated area

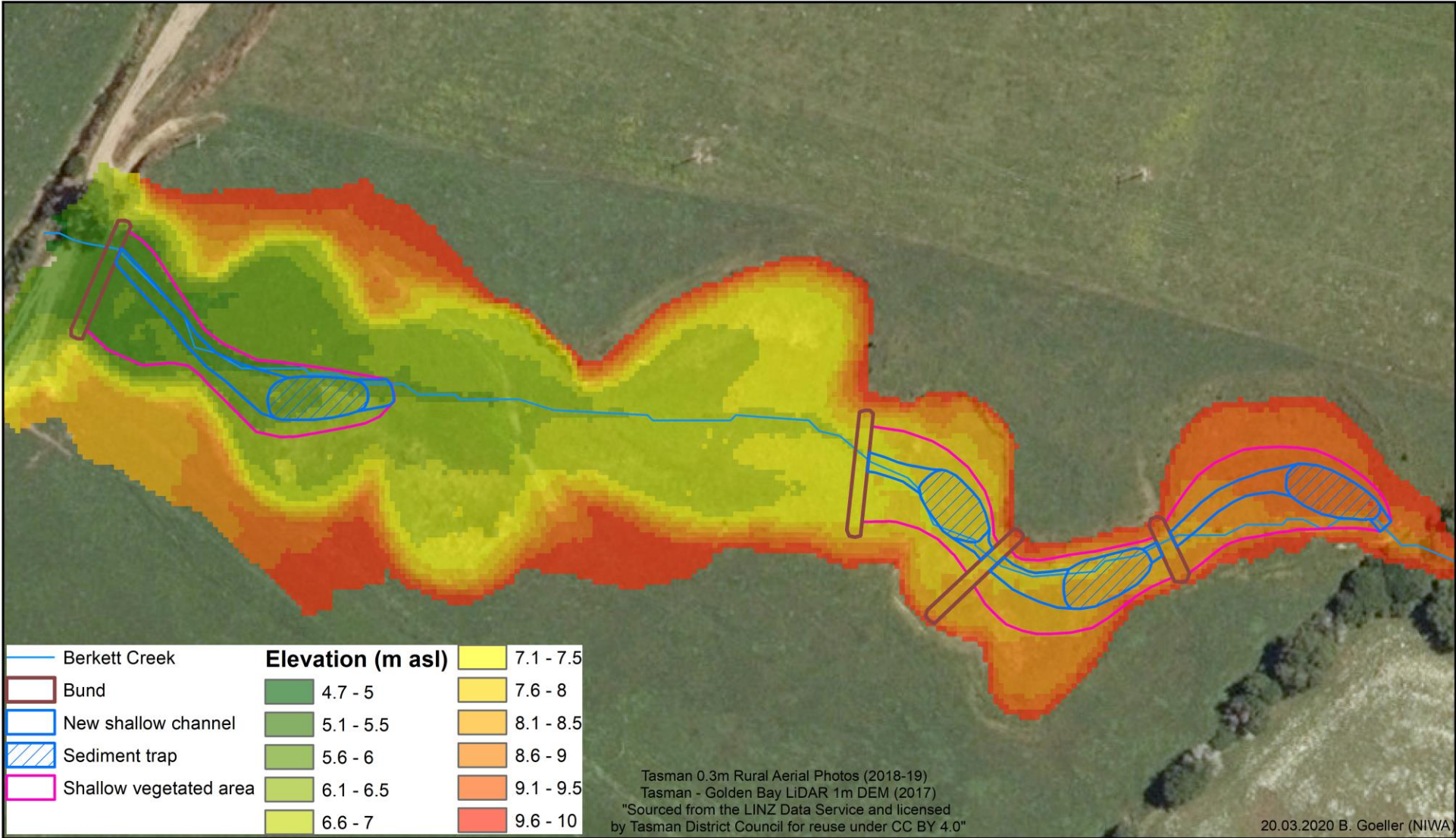
Tasman 0.3m Rural Aerial Photos (2018-19)  
"Sourced from the LINZ Data Service and licensed by Tasman District Council for reuse under CC BY 4.0"

20.03.2020 B. Goeller (NIWA)

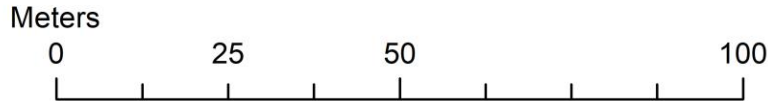
Note:  
Wetland bund centers 3m W x 0.4m H;  
New shallow channel 0.2 m D;  
Sediment traps 0.8-1.5m D;  
Shallow vegetated areas 0.1-0.3 m D



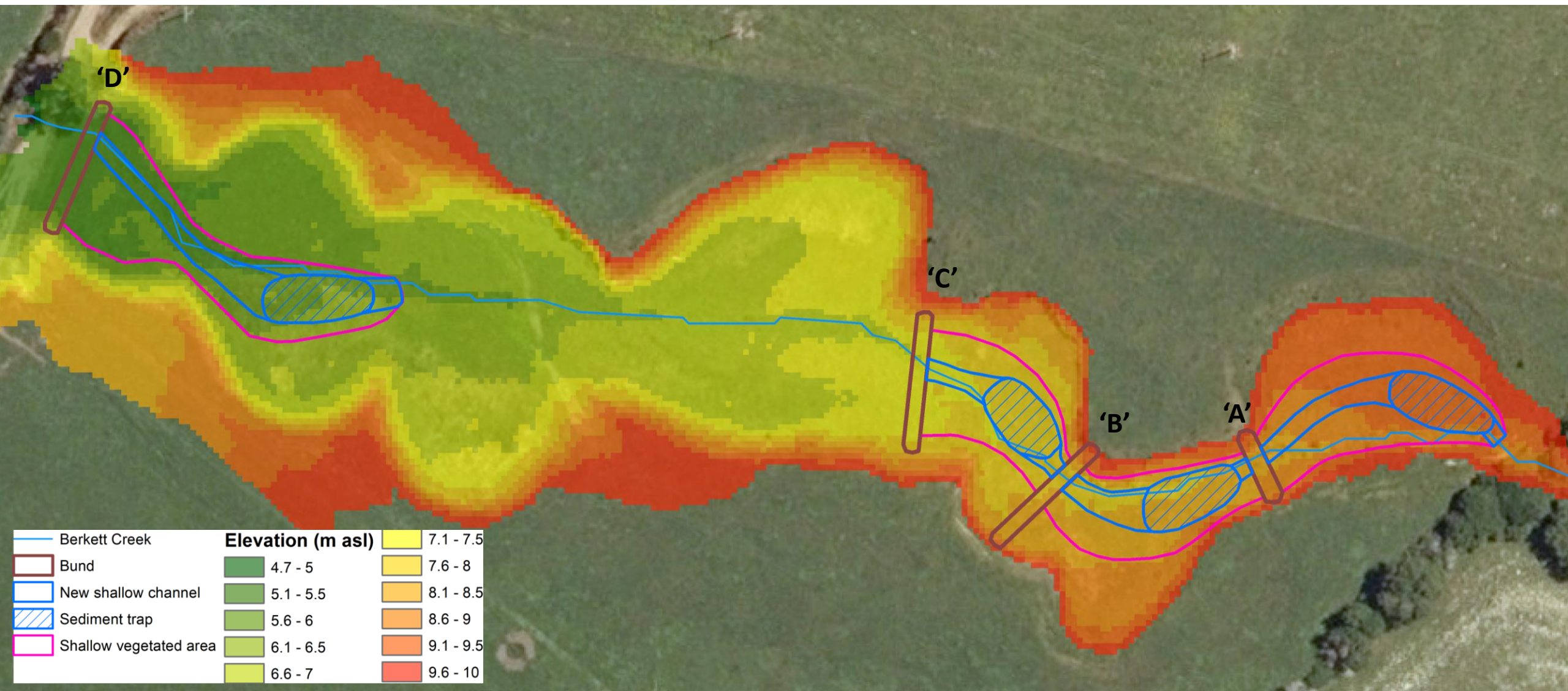
# Reilly Farm, Berkett Creek Floodplain Reconnection



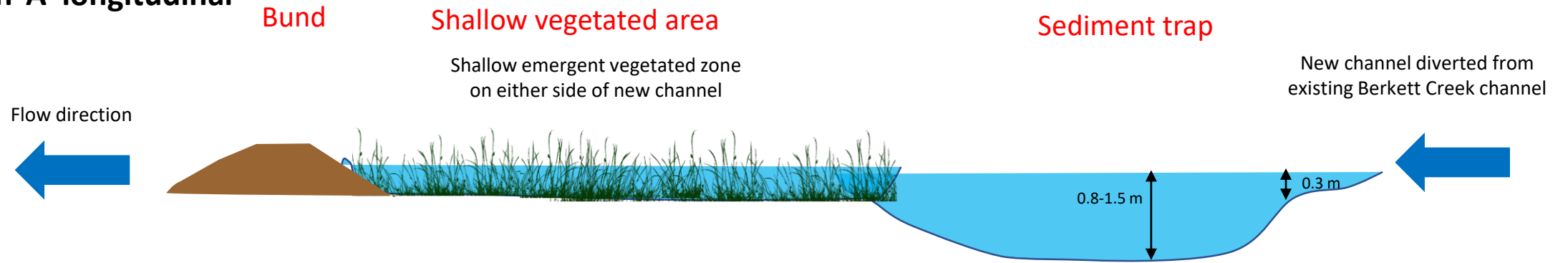
Note:  
 Wetland bund centers 3m W x 0.4m H;  
 New shallow channel 0.2 m D;  
 Sediment traps 0.8-1.5m D;  
 Shallow vegetated areas 0.1-0.3 m D



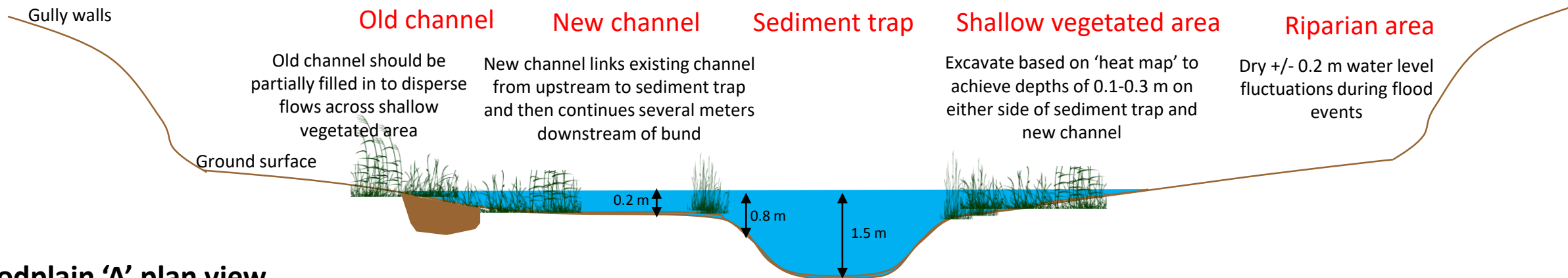
# Floodplain Reconnections 'A' – 'D'



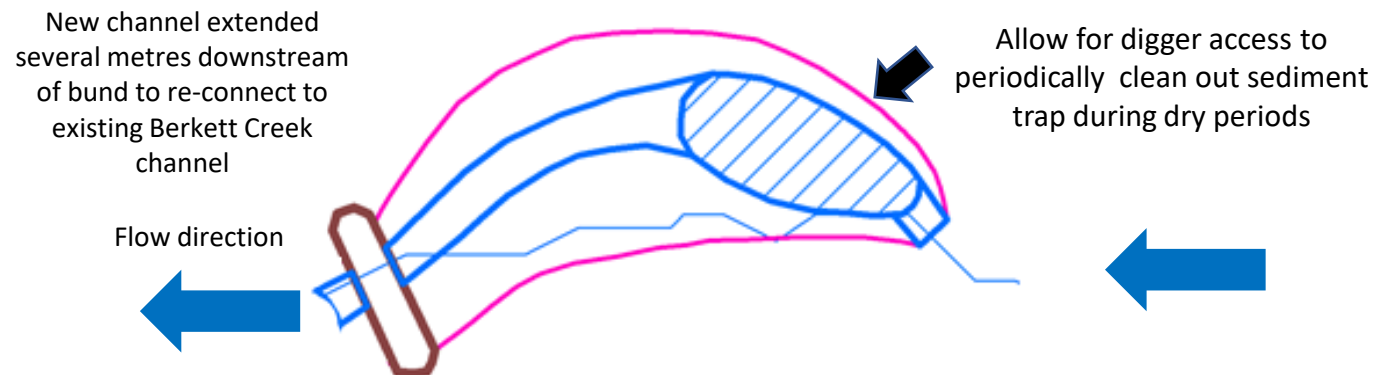
## Floodplain 'A' longitudinal



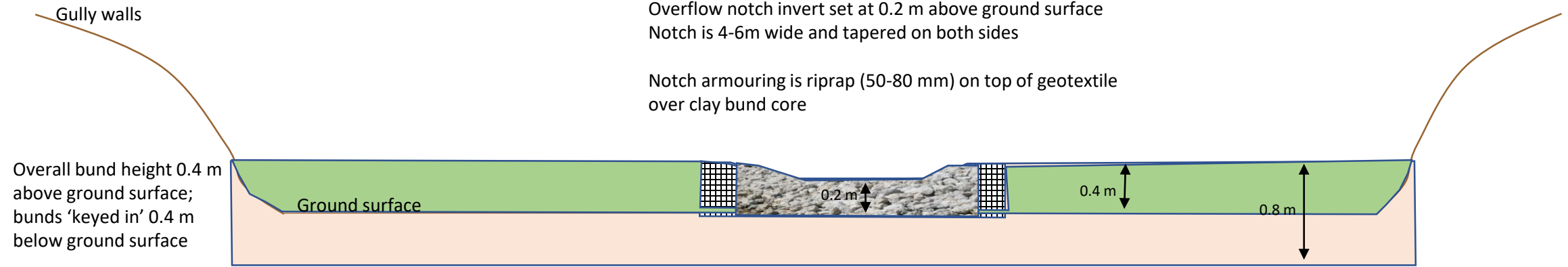
## Floodplain 'A' transverse view



## Floodplain 'A' plan view

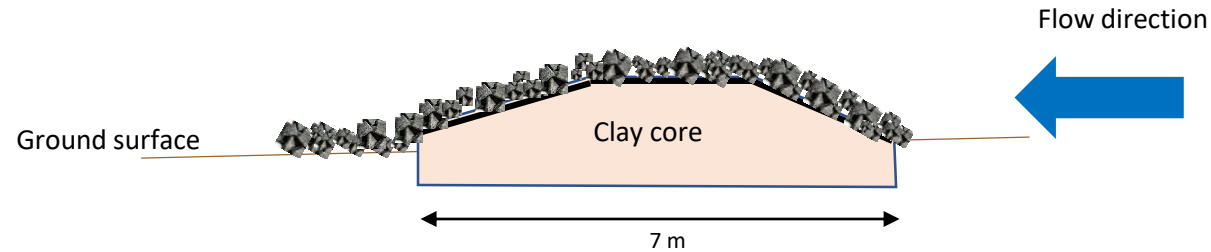


## Bund longitudinal view



## Bund transverse view

Core of bunds constructed with best available clayey material and well compacted in 100 mm thick layers (track rolled by digger) or 200 mm thick layers (sheepsfoot roller)



## Bund plan view

Overall lengths of individual bunds vary between 15-25 m to span gully walls

