



# Contaminated Land and Waste Special Interest Group Strategy

2020 – 2023



Ehara taku toa i te toa takitahi, engari he toa takitini  
*My strength is not that of a single warrior but that of many*

---

<sup>1</sup>This whakataukī was made famous by Padre Wi Huata, of the 28th Māori Battalion in 1921. Huata attributes the source of this saying to Paterangi of Ngāti Kahungunu. Huata was referring to the collective effort necessary for the success of the periodical, Te Toa Takatini, but the pēpeha applies equally in any situation where the combined efforts of many are needed to complete a project.

# Contents

- |   |                        |    |   |
|---|------------------------|----|---|
| 1 | Summary                | 8  | Success                                 |
| 2 | Vision                 | 9  | Regional sector priorities              |
| 3 | Purpose                | 10 | Decision-making criteria                |
| 4 | About us               | 11 | Strategy objectives                     |
| 5 | Regional sector values | 14 | Funding                                 |
| 6 | Key legislation        | 15 | Monitoring, reporting<br>and evaluation |
| 7 | Key drivers            |    |   |

Prepared by Isla Hepburn,  
Environment Canterbury,  
*Contaminated Land and Waste Special Interest  
Group Convenor.*

## Acknowledgments

I gratefully acknowledge the Contaminated Land and Waste SIG members and Bill Dyck for their contributions and comments during the preparation of this Strategy. Thanks also to those who generously gave their time to peer review the draft and to the Environment Canterbury Communications team for editing and design.

Ngā mihi,  
Isla Hepburn

# Summary

This Strategy sets out:

- the Contaminated Land and Waste Special Interest Group's vision
- the regional sector context we operate within
- legislation we function under
- objectives, funding opportunities and timeframes for key projects.

The overall direction for the Contaminated Land and Waste Special Interest Group (SIG) in the next three years is to make tangible progress towards achieving contaminated land data consistency nationwide, and to raise the SIG's profile and relevance.

The Strategy aligns the regional sector's structure and purpose with the priorities identified in the Regional Chief Executive Officers Annual Business Plan (2019).

Some of our objectives are game changers, such as achieving national contaminated land data consistency; others aim for continuous improvement or are 'business as usual'.

The key constraints to achieving our objectives are a lack of staff time and resourcing for SIG-related work, and a lack of readily available funding for key projects. This means we will need to work smarter, more cohesively as a team, and make the most of external collaborative opportunities.

Central government's current focus on freshwater, climate change and waste provide platforms to progress some objectives such as national data consistency, the risk assessment of landfills vulnerable to climate change, and waste projects. Some of our contaminated land objectives are not national priorities, but the SIG is opting to fill the gaps and has prioritised projects such as developing an implementation framework for the ecological soil guideline values.

Progress towards this Strategy's objectives will be reviewed on a regular basis at our SIG meeting. The Strategy itself will be evaluated and reviewed in 2023.



# Vision

*The Contaminated Land and Waste Special Interest Group is nationally recognised for sustainably managing contaminated land and minimising waste; using a united voice, best science, and by providing sound advice to achieve a happy, healthy Aotearoa.*

# Purpose

The purpose of this strategy is to:

- provide background and context to regional sector special interest groups
- outline the SIG's contaminated land and waste vision
- identify our objectives and how they link to sector priorities
- map out timeframes and actions for how we get there.

The strategy is the result of several workshop sessions with the SIG and wider consultation with regional sector representatives. The strategy will guide our work programme from 2020-2023, help to raise the profile of the SIG, and promote the role of contaminated land and waste staff in councils and with key stakeholders. It will assist in communicating with key partners and stakeholders such as the Resource Managers Group (RMG), government departments, territorial authorities and industry groups.



# About us

## Who are we and where do we fit

The regional sector comprises 16 regional councils and unitary authorities. It is serviced by 26 Special Interest Groups representing a broad range of technical and professional disciplines. There are five lead SIGs (River Managers, Resource Managers, Corporate and Finance, Transport, and Bio-Managers). Sitting underneath the lead SIGs are several smaller sub-SIGs. There are four stand-alone SIGs reporting directly to the Regional Chief Executive Officers (RCEOs).

The Contaminated Land and Waste SIG is a sub-SIG reporting to the Resource Managers Group (RMG), which in turn reports to the RCEOs.

## Regional Sector Special Interest Group (SIG) Network Structure Chart

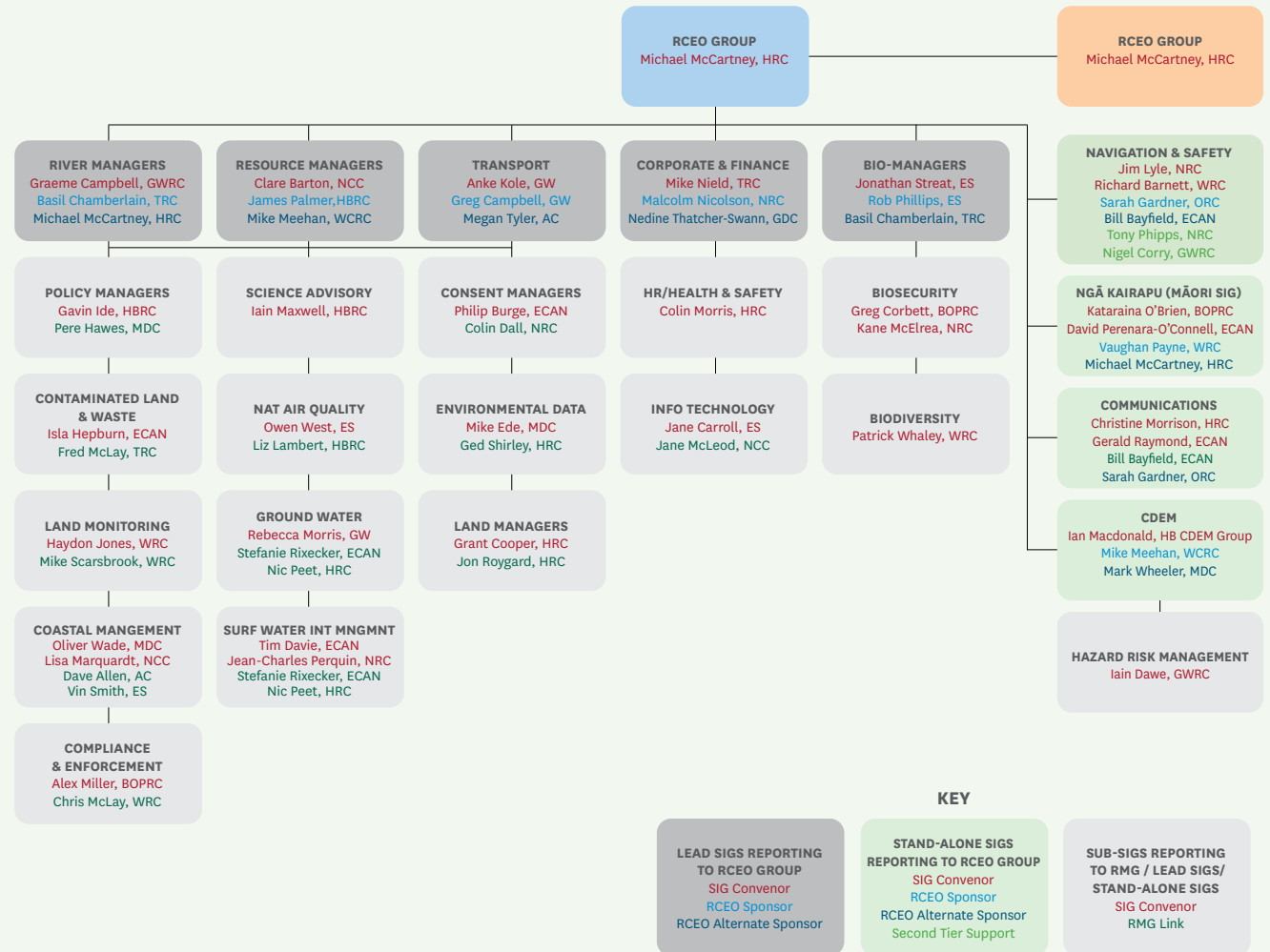


Figure 1: SIG structure as at 25 November 2019

# Regional sector values

The regional sector values are outlined in the RCEO's Annual Business Plan 2019<sup>1</sup>.

The values describe the guiding principles upon which the sector and its activities are based:

- **Side by side:** Collectively we are strong
- **Unity:** We speak with a unified voice
- **Integrity:** We value our data and information when making decisions
- **Mana Māori:** We recognise and promote the important role of tangata whenua
- **Our people:** We recognise that our people are the strength of the sector
- **Continuous improvement:** We continuously reflect on ways in which we can improve
- **Courage:** We have the courage to make brave and hard decisions.

The Contaminated Land and Waste SIG will adhere to the sector values.

<sup>1</sup><https://boplass2.sharepoint.com/sites/rsip-regionalsectorportal/rceo/Documents/Final%20Regional%20Sector%20Business%20Plan%20-%20October%202019.pdf>





# Key legislation

Statutes relevant to SIG members include:

- Resource Management Act (RMA, 1991)
- Waste Minimisation Act (WMA, 2008)
- Hazardous Substances and New Organisms Act (HSNO, 1996)
- Local Government Act (LGA, 2002)



# Key drivers

Some of the Strategy's drivers came out of two SIG workshops held in 2019. Themes highlighted were:

- The need for recognition and to be heard by key stakeholders
- Legislative imperatives like the RMA, WMA and HSNO
- Political changes at a national and regional level
- Understanding and managing risk to environmental health, including impacts on people and the wider environment, and dealing with land-use change and urbanisation
- Providing science-based evidence to inform good decisions
- Opportunities to influence and make use of central government science funding
- Preparing to deal with new issues, such as emerging contaminants.



# Success

Success is putting our vision into practice

## Components of our vision    What they look like in practice

### **NATIONALLY RECOGNISED**

- We provide regional sector strategic leadership on contaminated land and waste issues
- We enhance the SIG visibility and the perception of the SIG is improved
- Our key stakeholders understand what we do and why (and support us)
- People seek guidance from us because they trust and value our knowledge and experience
- Our data is accurate, consistent and freely available nationwide

### **SUSTAINABLE MANAGEMENT**

- We advocate for the minimisation of waste and ensure that residual waste is managed appropriately
- We help to prevent discharges to the environment
- We investigate, manage and remediate contaminated land so that it is fit for purpose
- Mahinga kai thrive, and sustain and nourish communities

### **UNITED VOICE**

- We seek consensus and speak with a united voice
- We continually advocate for regional sector priorities at central government level
- We are forward-looking and help inform the conversation with internal and external stakeholders
- We respond to unexpected events quickly and constructively

### **BEST SCIENCE**

- We use science to understand and manage the risk to human health and the environment
- Our science is applied for the health of the environment now and in the future
- Our data and information play an integral role in national policy development
- We bolster our existing capability and capacity

### **SOUND ADVICE**

- We provide sound advice using science-based evidence in decision making
- We feel valued, trusted and are confident to speak the truth in a constructive way to our partners and key stakeholders
- We improve our knowledge of Mātauranga Māori and how this relates to contaminated land and waste in order to provide better advice to Māori

### **HAPPY, HEALTHY AOTEAROA**

- The mauri of our land and water is restored by the sustainable management of our natural resources and indigenous biodiversity
- Our communities are healthy and happy through improved wellbeing and resilience

# Regional sector priorities

The Contaminated Land and Waste SIG strategy objectives have been developed within the context of the wider regional sector and central government priorities to ensure that we are travelling in the right direction and contributing to the success of the sector.

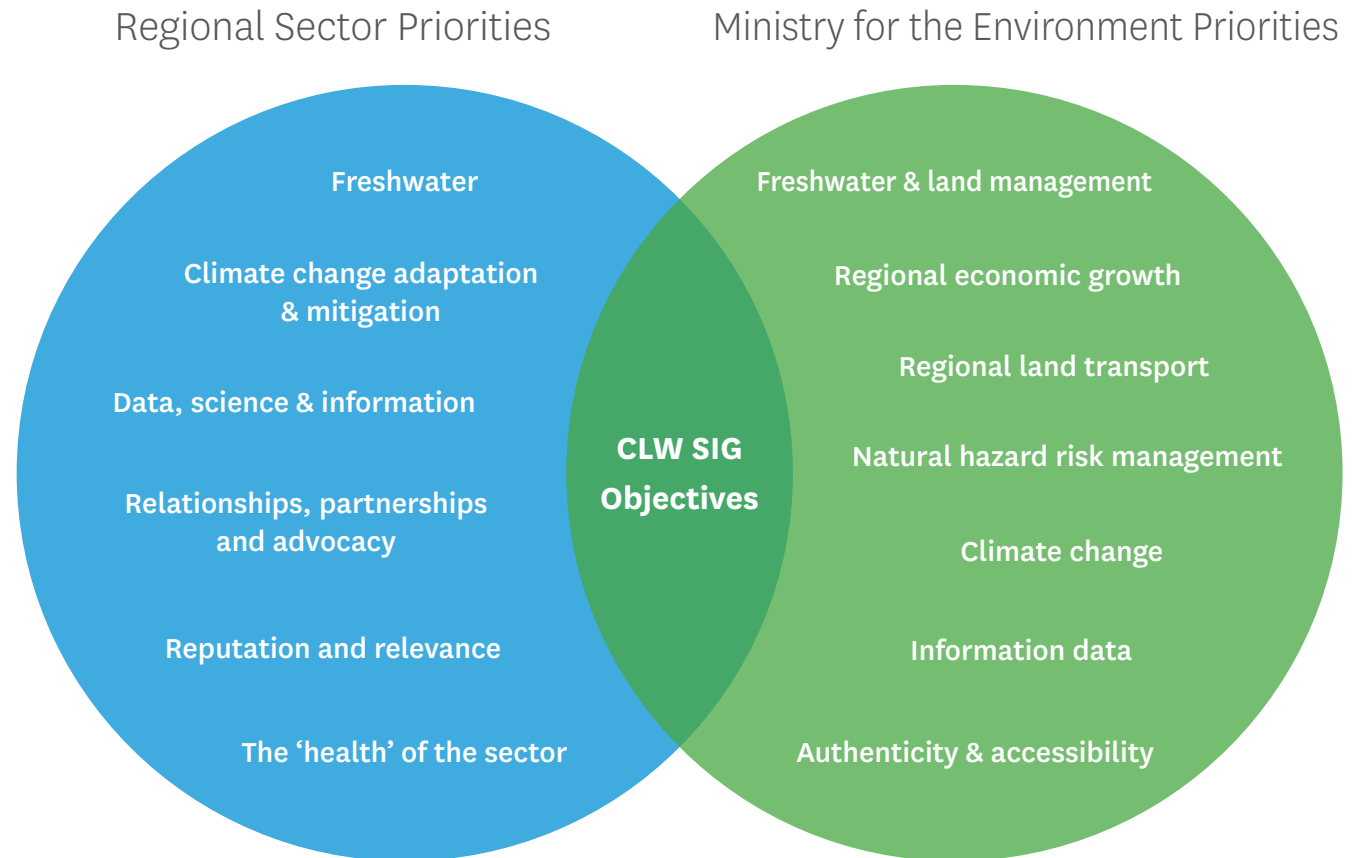


Figure 2: Regional sector and central government priorities

# Regional sector decision-making criteria

The Regional Chief Executive Officers Annual Business Plan documents a series of decision-making criteria and principles for assessing which projects or tasks best deliver on our priorities. This is a useful framework for the Contaminated Land and Waste SIG to apply when deciding which projects should be prioritised.

**Making a difference:** Whether the project has the potential to propel the sector forward and will 'make a difference' at a national level.

**Ability to influence national policy direction:** Linked to above, how the sector can influence and be linked to central government priorities.

**Urgency:** The degree to which the project addresses a critical need.

**Exceptionality:** The degree to which the project or initiative sits outside 'business as usual' for the sector and is of an exceptional nature.

**Thought leadership:** The extent to which the project represents an opportunity for the sector to drive innovation in a given field.

**Mutually beneficial:** Whether the project has pan-sector applicability, as opposed to being of use to a handful of councils. (The Sector recognises there will be instances where individual councils must act alone.)



Figure 3: Regional sector decision making criteria

# Contaminated Land & Waste SIG Strategy objectives

Objectives are based on the priorities, drivers and barriers identified by the Contaminated Land and Waste SIG and are linked to the regional sector priorities. The timeframes listed here are indicative start dates, as at the time of writing. These may be subject to external influences and thus change. It is recommended that a work programme or implementation plan is developed to accompany this Strategy which details project timeframes. Project timeframes shall be reviewed at six monthly Contaminated Land and Waste SIG meetings.

Objective	Link to regional sector priorities	Outcomes	Key projects	How we get there	Indicative Timeframe	Funding
<b>GAME CHANGERS</b>						
To develop transformative tools to assist the regional sector in minimising and managing waste; and identifying, investigating and managing contaminated land	<ul style="list-style-type: none"> <li>Data, science and information</li> <li>Climate change adaptation and mitigation</li> <li>Reputation and relevance</li> </ul>	Contaminated land data is nationally consistent and easily and freely available	National Contaminated Land Data Consistency	<ul style="list-style-type: none"> <li>Pulse check of the progress councils have made to achieving national data consistency</li> <li>Identify gaps and barriers to achieving consistency by 2026 (timeframe given by RCEOs)</li> <li>Develop project brief and proposal for the development of a national contaminated land data portal</li> <li>Liaise with Regional Council Collaboration SIG and explore opportunity of regional sector funding</li> </ul>	2020-2023	None currently allocated
		Landfills vulnerable to potential climate change are identified and risk assessed	National Landfill Risk Assessment project	<ul style="list-style-type: none"> <li>Partner with Ministry for the Environment, Department of Conservation and Local Government NZ to engage a consultant to design a risk assessment which utilises regional sector data</li> </ul>	2020-2021	Phase 1 \$25,000 (MfE)  Phase 2 and 3 to be cost shared between regional councils and unitary authorities
		Contaminated sites are risk assessed and prioritised	Rapid Risk Screening Tool	<ul style="list-style-type: none"> <li>Develop a project brief and funding proposal</li> <li>Work with key stakeholders to apply for Envirolink advice and tools grant</li> </ul>	2020	Waste Minimisation Fund and council contributions
		Councils are adequately prepared for managing waste in the event of future disasters.	Disaster Waste Management Planning Tool	<ul style="list-style-type: none"> <li>Canterbury, Waikato and Bay of Plenty regional councils work in partnership, utilising central government funding, to develop a workable tool for disaster waste management planning</li> </ul>	2021	To be determined
To be future ready	<ul style="list-style-type: none"> <li>Science data and information</li> <li>Climate change adaptation and mitigation</li> </ul>	<p>Identification of potential climate change impacts on contaminated land</p> <p>SIG focus shifts from reacting to short term issues to being proactive on longer term strategic issues</p> <p>The regional sector has a relevant Contaminated Land and Waste Science Strategy and the sector is supported by relevant science, research and development initiatives in managing waste and contaminated land effectively</p>	Science Strategy	<ul style="list-style-type: none"> <li>Develop a science strategy and strategic road map for required contaminated land and waste research</li> <li>Work collaboratively with key stakeholders</li> <li>To identify emerging contaminants of concern and develop a better understanding of the risk they pose to human health and the environment in New Zealand</li> <li>Write think piece on waste</li> </ul>	2021	To be determined

Objective	Link to regional sector priorities	Outcomes	Key projects	How we get there	Timeframe	Funding
<b>CONTINUOUS IMPROVEMENT</b>						
To publish nationally consistent guidance to support the function of regional councils and unitary authorities in the management of contaminated land and waste	<ul style="list-style-type: none"> <li>Data, science and information</li> <li>Freshwater</li> <li>Reputation and relevance</li> </ul>	Regional sector staff are well informed, sufficiently supported and working to a nationally consistent standard in their day-to-day roles	<ul style="list-style-type: none"> <li>HAIL site identification handbook</li> <li>XRF use and application guidance</li> <li>Tier 2 Risk Assessment</li> </ul>	<ul style="list-style-type: none"> <li>SIG members to draft. HAIL Site ID handbook and XRF use and application guidance are in progress</li> </ul>	2020	In-kind contributions by councils
To assist with the development of nationally consistent guidance for contaminated land and waste	<ul style="list-style-type: none"> <li>Freshwater</li> <li>Data, science and information</li> <li>Reputation and relevance</li> </ul>	<p>The regional sector is appropriately represented on technical advisory groups in the development of national guidelines.</p> <p>The regional sector has consistent guidelines which are fit for purpose</p>	<ul style="list-style-type: none"> <li>Ecological soil guideline values</li> <li>Bioavailability and Bioaccessibility</li> <li>Contaminated Land Management Guideline # 4 and Data Consistency</li> <li>Disposal to Land Technical Guidelines</li> <li>XRF</li> <li>Biosolids guidelines</li> </ul>	<ul style="list-style-type: none"> <li>Prepare submissions representing sector views on relevant government consultation documents</li> <li>Develop a framework for the implementation of the Ecological Soil Guideline Values in collaboration with key stakeholders</li> </ul>	Ongoing	Various
To identify, build and improve key relationships so that people know who we are, what we do and can turn to us for expertise	<ul style="list-style-type: none"> <li>Relationships, partnerships and Advocacy</li> <li>Reputation and relevance</li> </ul>	<p>We engage with the right people at the right time in the right way</p> <p>Greater clarity of key relationships: people know who we are, what we do and can turn to us for expertise</p> <p>Stakeholders are kept up to date about national and regional matters and potential issues and solutions</p> <p>Improved national coordination and collaborative working between key stakeholders</p> <p>Strengthened collaboration with Māori and incorporate Mātauranga Māori in contaminated land and waste work</p>	<ul style="list-style-type: none"> <li>Stakeholder Engagement Plan and Relationship Management Strategy</li> </ul>	<ul style="list-style-type: none"> <li>Conduct relationship mapping Exercise.</li> <li>Update Contaminated Land and Waste SIG Stakeholder and Engagement Plan</li> <li>Identify key stakeholders we aren't, but should be, engaging with</li> </ul>	2020	To be determined

Objective	Link to regional sector priorities	Outcomes	Key projects	How we get there	Timeframe	Funding
<b>BUSINESS AS USUAL</b>						
To raise SIG profile	<ul style="list-style-type: none"> <li>Reputation and relevance</li> <li>Health of the sector</li> </ul>	<p>SIG members are kept up to date with sector issues and progress against SIG strategy</p> <p>Opportunities to share resources and work collaboratively are identified early</p>	<ul style="list-style-type: none"> <li>HAIL site identification handbook</li> <li>XRF use and application guidance</li> <li>Tier 2 Risk Assessment</li> </ul>	<ul style="list-style-type: none"> <li>Convenor to send regular emails to SIG with project updates</li> <li>Reporting to RMG at each opportunity.</li> <li>Keep RMG liaison fully informed and adopt no-surprises policy</li> <li>Explore benefits of SIG co-convenor to extend networks e.g. co-convenor for contaminated land and co-convenor for waste</li> <li>SIG project presentations at conferences</li> <li>SIG convenor or 'super connectors' to present/attend other SIGs</li> <li>Regular updates to the WasteMINZ Contaminated Land Management Sector Group and ALGA</li> <li>Celebrate and communicate SIG achievements and recognise individual member efforts through well-done awards</li> </ul>		
To make submissions on technical or policy documents affecting contaminated land and waste	<ul style="list-style-type: none"> <li>Data, science and information</li> <li>Reputation and relevance</li> </ul>	Our collective knowledge and expertise are used effectively and for the improvement of contaminated land management in New Zealand	<ul style="list-style-type: none"> <li>MfE Priority Product Consultation document</li> <li>MfE Waste Landfill Levy</li> <li>PMSCA Rethinking Plastics</li> <li>MfE CLMGs #1 and 5</li> </ul>	<ul style="list-style-type: none"> <li>Form sub-SIG working groups to collate comments on consultation documents and produce submissions</li> </ul>	Ongoing	Not required
To make the most of available funding opportunities	<ul style="list-style-type: none"> <li>All</li> </ul>	<p>Improved access to funding to enable a greater number of priority projects to be addressed</p> <p>Funding is applied effectively and efficiently, demonstrating value for money and sound investment for funding sources</p>	<ul style="list-style-type: none"> <li>To be scoped</li> </ul>	<ul style="list-style-type: none"> <li>Conduct a stocktake of funding opportunities and the opportunities available to the SIG (e.g., Envirolink, SSIFF (Strategic Science Investment Fund), Contaminated Sites Remediation Fund, MW Fund, HRC, etc)</li> </ul>	2020-2021	Not required



# Funding

Unlike some SIGs (for example the River Managers or Bio-managers), the Contaminated Land and Waste SIG does not have a 'pot of money' to draw upon for projects. Historically the group has drawn from several sources including the sector, central government agencies (like the Ministry for the Environment) and funding schemes such as Envirolink.

The following funds have been identified as available to regional councils and unitary authorities:

- Contaminated Sites Remediation Fund (Ministry for the Environment)
- Envirolink Tools and Advice Grants (Ministry of Business, Innovation and Employment)
- Health Research Council
- Provincial Growth Fund
- Regional Councils Collaboration and Cooperation Regional Sector - (ReCoCo)
- Strategic Science Investment Fund
- WasteMINZ Strategic Investment Fund
- Waste Minimisation Fund (Ministry for the Environment)

It is recommended these be explored further and a more strategic approach to the funding of SIG projects is developed in order to make the most of collaborative and co-funding opportunities available to regional councils, and to ensure that funding is not a barrier to projects getting off the ground.



# Monitoring, reporting and evaluation of projects against strategic priorities

The Contaminated Land and Waste SIG Strategy objectives will guide most of the SIG's work in the period 2020-2023 and should be referred to at each SIG meeting. Progress against the objectives shall be evaluated at least annually to ensure that the SIG is achieving its desired outcomes.

SIG achievements shall be recognized and recorded by the convener and communicated with wider stakeholders.

The strategy will be reviewed and updated in 2023.





*Facilitating sustainable development  
in the Canterbury region*  
[www.Environment Canterbury.govt.nz](http://www.EnvironmentCanterbury.govt.nz)

R20/25  
© Environment Canterbury 2020